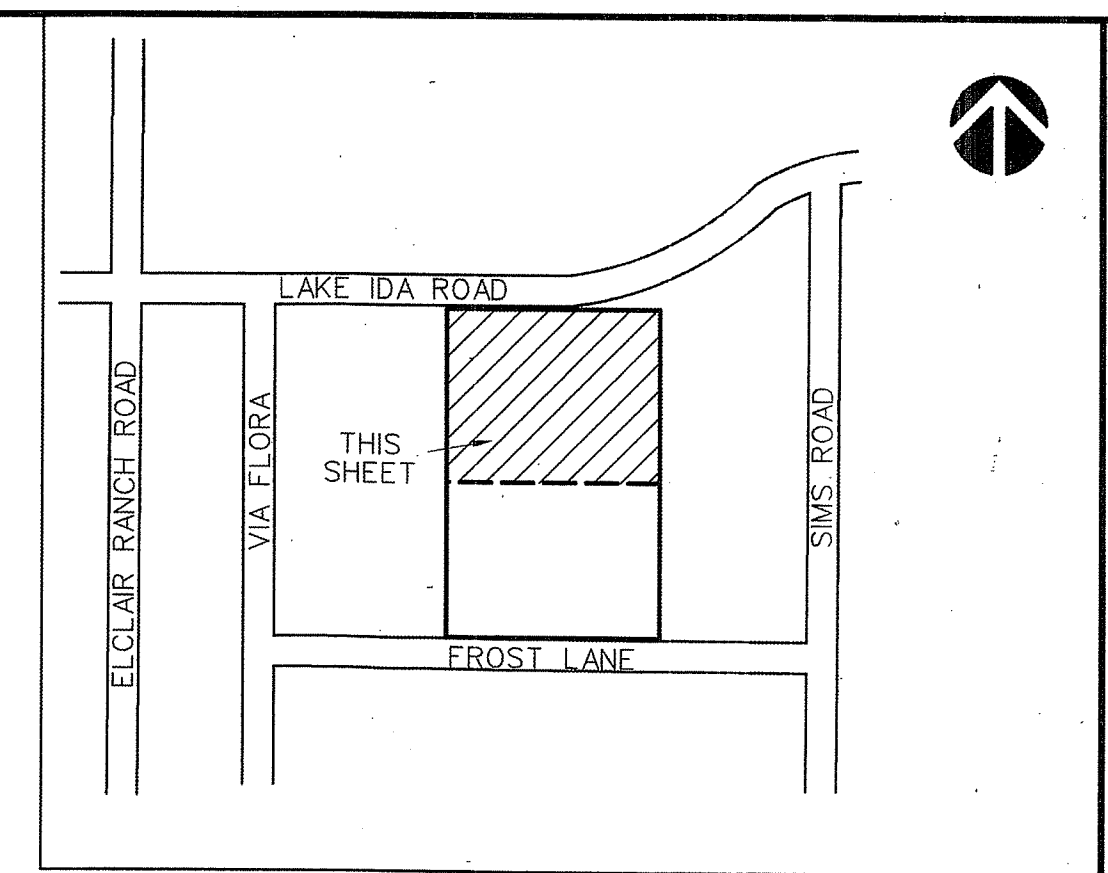


PERIMETER

SURVEYING & MAPPING
Certificate of Authorization No. LB7264
Prepared by: Jeff S. Hodapp, P.S.M.
947 Clint Moore Road
Boca Raton, Florida 33487
Tel: (561) 241-9988
Fax: (561) 241-5182

STONYBROOK ON THE LAKE PUD

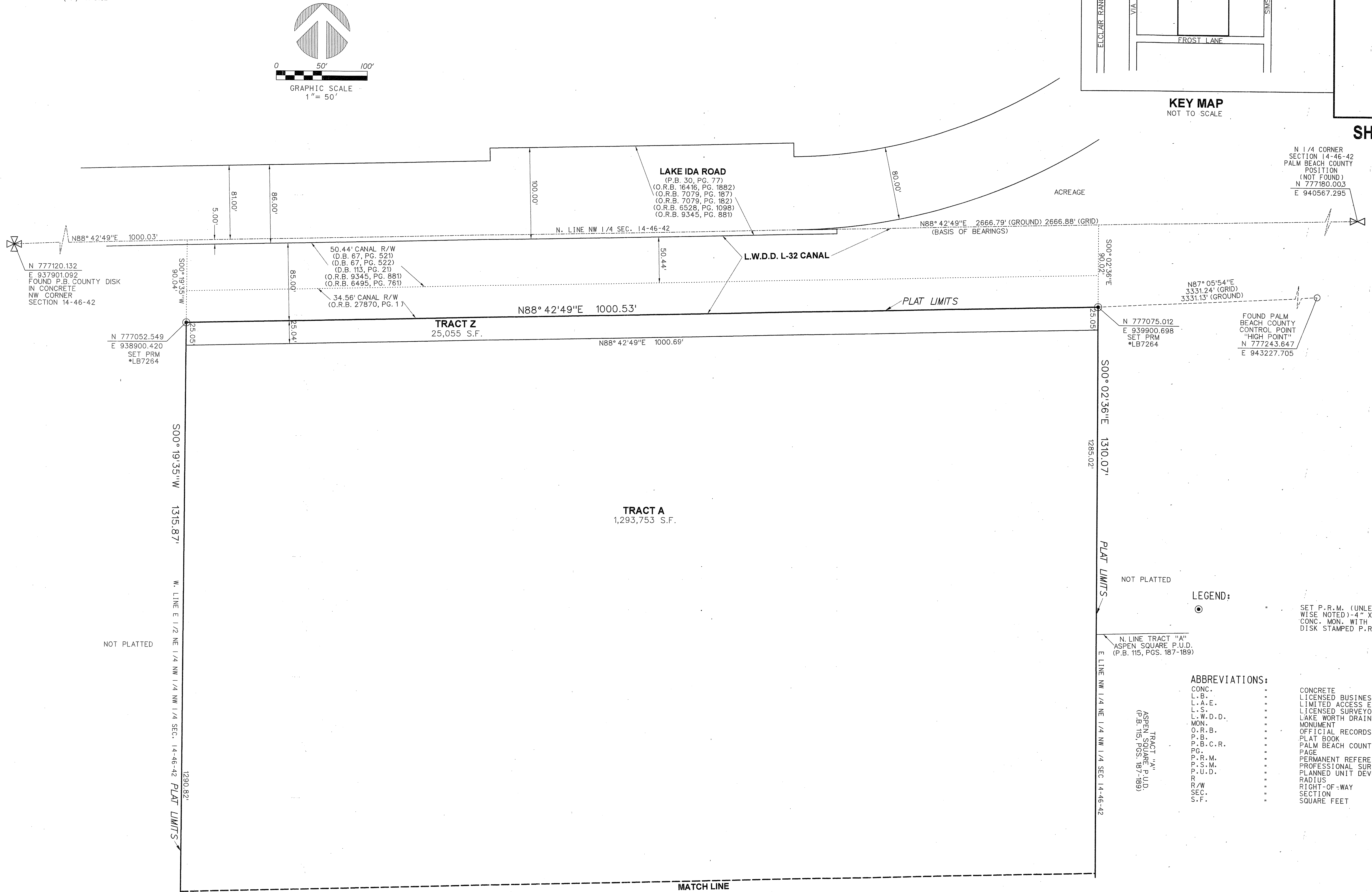
A PORTION OF THE NORTHWEST ONE-QUARTER OF
SECTION 14, TOWNSHIP 46 SOUTH, RANGE 42 EAST,
PALM BEACH COUNTY, FLORIDA.



KEY MAP
NOT TO SCALE

20

SHEET 2 OF 3



N 1/4 CORNER
SECTION 14-46-42
PALM BEACH COUNTY
POSITION
(NOT FOUND)
N 777180.003
E 940567.295

N 777120.132
E 937901.092
FOUND P.B. COUNTY DISK
IN CONCRETE
NW CORNER
SECTION 14-46-42

N 777052.549
E 938900.420
SET FRM
*LB7264

N 777075.012
E 939900.698
SET FRM
*LB7264

FOUND PALM
BEACH COUNTY
CONTROL POINT
"HIGH POINT"
N 777243.647
E 943227.705

LEGEND:

- SET P.R.M. (UNLESS OTHERWISE NOTED)-4" X4" CONC. MON. WITH ALUMINUM DISK STAMPED P.R.M.*LB7264

ABBREVIATIONS:

- CONC. CONCRETE
- L.B. LICENSED BUSINESS
- L.A.E. LIMITED ACCESS EASEMENT
- L.S. LICENSED SURVEYOR
- L.W.D.D. LAKE WORTH DRAINAGE DISTRICT
- MON. MONUMENT
- O.R.B. OFFICIAL RECORDS BOOK
- P.B. PLAT BOOK
- P.B.C.R. PALM BEACH COUNTY RECORDS
- PG. PAGE
- P.R.M. PERMANENT REFERENCE MONUMENT
- P.S.M. PROFESSIONAL SURVEYOR & MAPPER
- P.U.D. PLANNED UNIT DEVELOPMENT
- R. RADIUS
- R/W. RIGHT-OF-WAY
- SEC. SECTION
- S.F. SQUARE FEET

TRACT "A"
ASPEN SQUARE P.U.D.
(P.B. 115, PGS. 187-189)

MATCH LINE

SEE SHEET 3